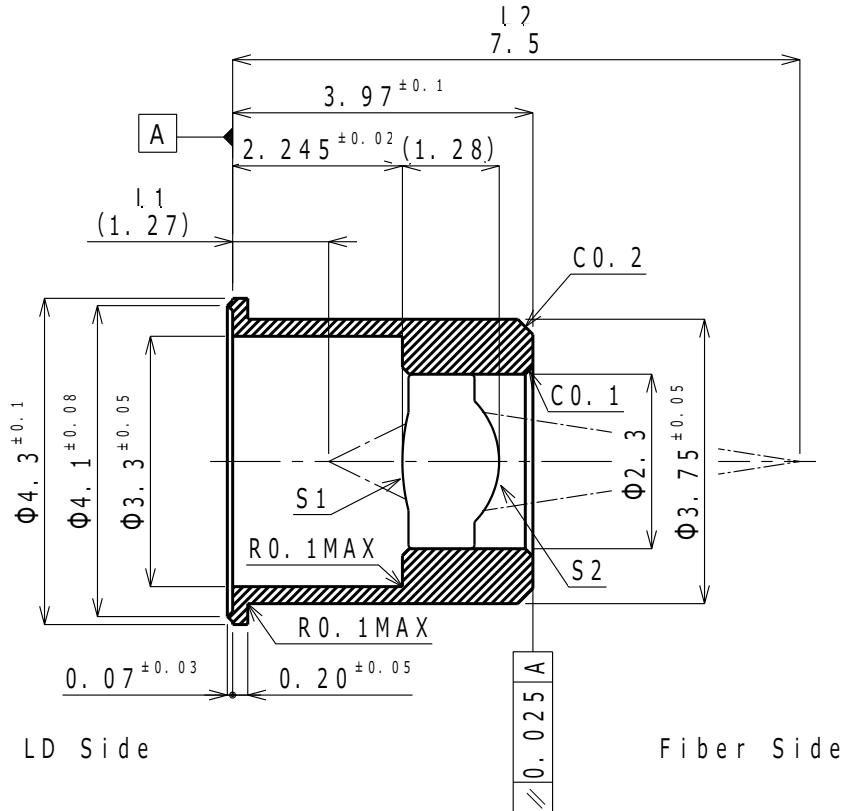


Product No. : EYLGMB245R

◆ Dimensions



◆ Optical Characteristics

	Items	Unit	Design
1	Design wavelength	nm	1310
2	Focal length	mm	1.13
3	Numerical aperture	S1	0.40
4		S2	
5	Magnification		×2.5
6	Working distance (L1)	mm	1.27
7	Conjugate distance (L2)	mm	7.50
8	Effective diameter	S1	Φ0.90
9		S2	Φ1.20
10	Beam Diameter	mm	
11	Transmittance (at 1260-1625 nm)	%	> 97
12	Wavefront aberration	$\lambda_{rms}$	≤ 0.035
Remarks:			

◆ Materials

Glass material	K-VC89
Barrel material	SF20F