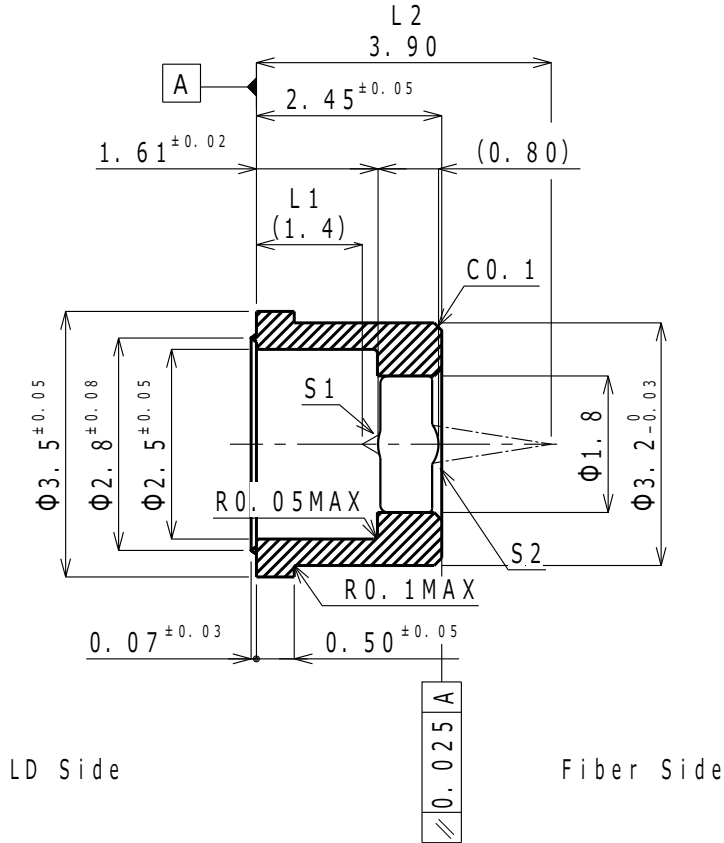


Product No. : EYLGMBFB305R

◆ Dimensions



◆ Optical Characteristics

	Items	Unit	Design
1	Design wavelength	nm	1310
2	Focal length	mm	0.46
3	Numerical aperture	S1	0.50
4		S2	0.16
5	Magnification		×3.1
6	Working distance (L1)	mm	1.40
7	Conjugate distance (L2)	mm	3.90
8	Effective diameter	S1	Φ0.34
9		S2	Φ0.52
10	Beam Diameter	mm	
11	Transmittance (at 1260-1625 nm)	%	> 97
12	Wavefront aberration	λ_{rms}	≤0.035
Remarks:			

◆ Materials

Glass material	K-VC89
Barrel material	SF20F