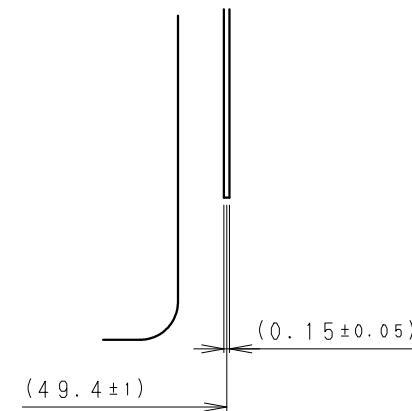


DETAIL A  
(5 : 1)



DETAIL B  
(5 : 1)

NOTE (注記)

1. TAB PULLING STRENGTH OVER 9.8N  
[端子溶接強度: 9.8N以上]
2. TAB MATERIAL: NICKEL OR STAINLESS STEEL WITH NICKEL PLATING  
[端子材料: ニッケルもしくはNiめっきステンレス鋼板]
3. ( ): REFERENCE DIMENSION AND ANGLE  
[ ( ) 寸法、角度は参考値]

PRODUCT NO.	BR-CT2P	SCALE	2 : 1
DRAWING NO.	SUT2	UNIT: mm	