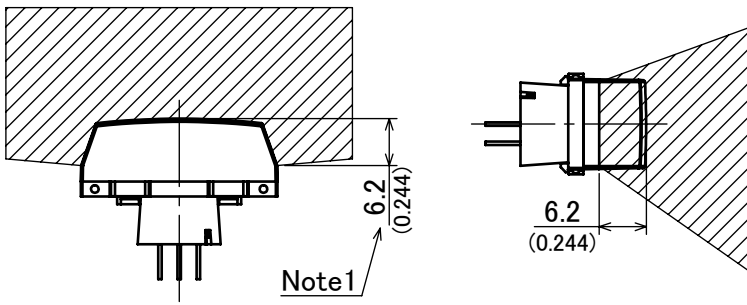
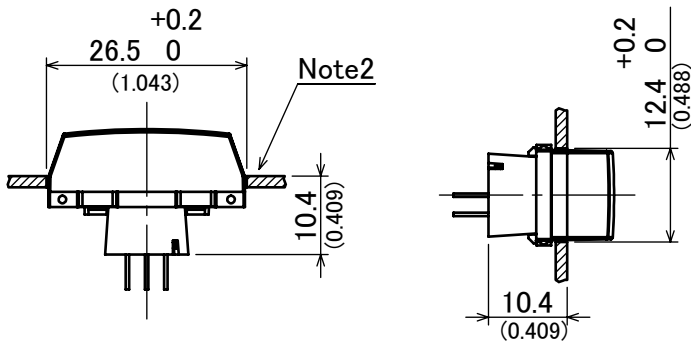


Detection range



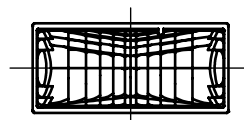
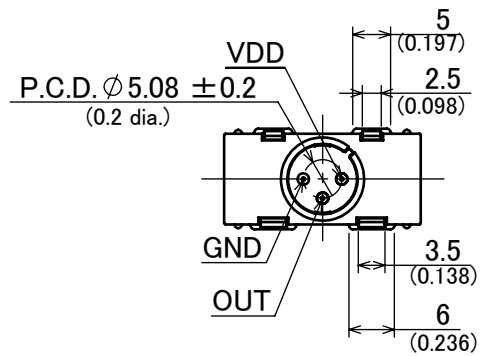
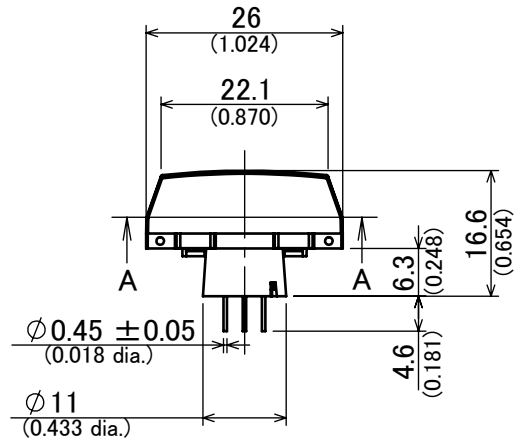
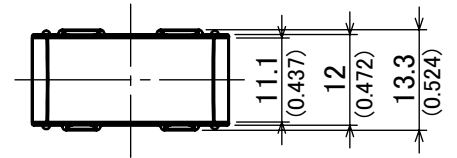
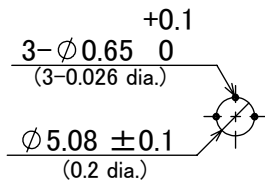
Note1

Recommended panel mouting hole dimensions



Note2

Recommended PC board pattern



SECTION A-A

Note1 : In order to ensure proper detection, install it with the lens exposed at least 6.2mm (0.244inch)

Note2 : As for panel mouting hole, tapering or making a large size hole should be done.

General tolerance ± 0.5 mm (± 0.020 inch)

Parts No. EKM***0511**

Date July.07.2017

Name PIR MOTION SENSOR 'PaPIRs' EKM series (1/2)
(Horizontally wide detection type)

Scale 1:1

Unit mm

Tolerance

Panasonic Corporation
Eco Solutions Company