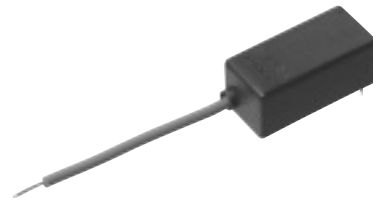


High Voltage Module

China

Type: **SHV**



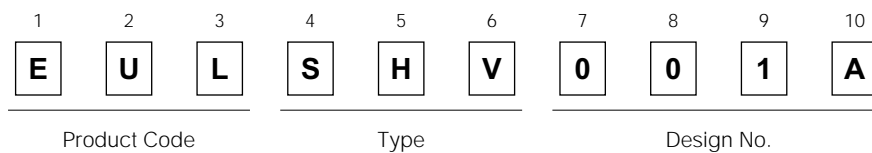
■ **Features**

- A new safety design where a too high DC voltage breaks the wire which is surrounded with insulation comprised of non-flammable epoxy resin potted in a vacuum state
- Drive possibility by wide range of ps between DC 1.5 V and 12 V or to AC 100 V

■ **Recommended Applications**

- Negative ion devices
- Air cleaners or health equipment

■ **Explanation of Part Numbers**

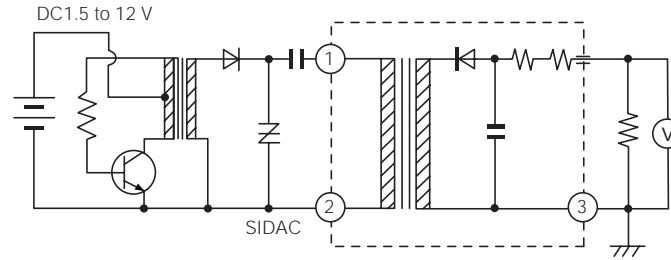


■ **Performance Characteristics (Typical Example)**

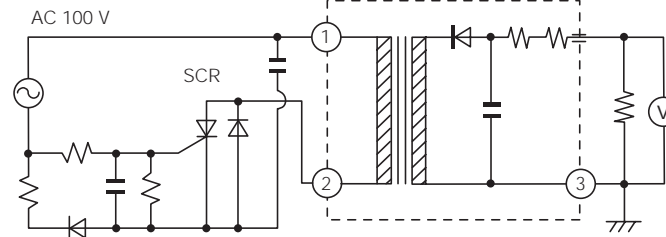
Characteristics	Specifications
Input Voltage	DC 1.5 V to 12 V, AC 100 V
HV Output Voltage	±6 kV DC
Output Current	0 to 10 μA

■ Block Diagram

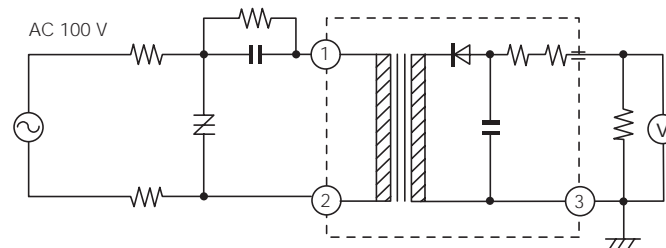
① DC drive Circuit



② AC drive SCR Circuit



③ AC drive SIDAC Circuit



■ Dimensions in mm (not to scale)

