

## 11 mm Square Encoders (Long-life type)

Type: **EVYC**

### ■ Features

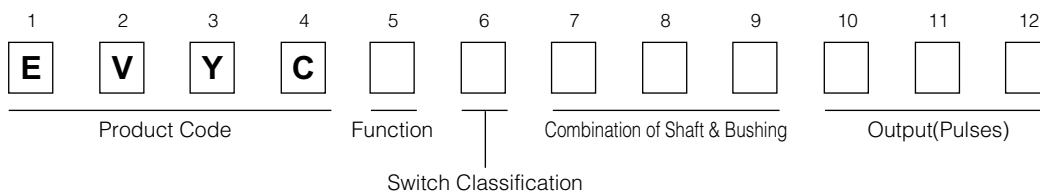
- Long life
- Compact and thin design (with a switch)



### ■ Recommended Applications

- Simple car navigation system: Europe  
(For entering the Address data of destinations  
- alpha-numeric symbols)

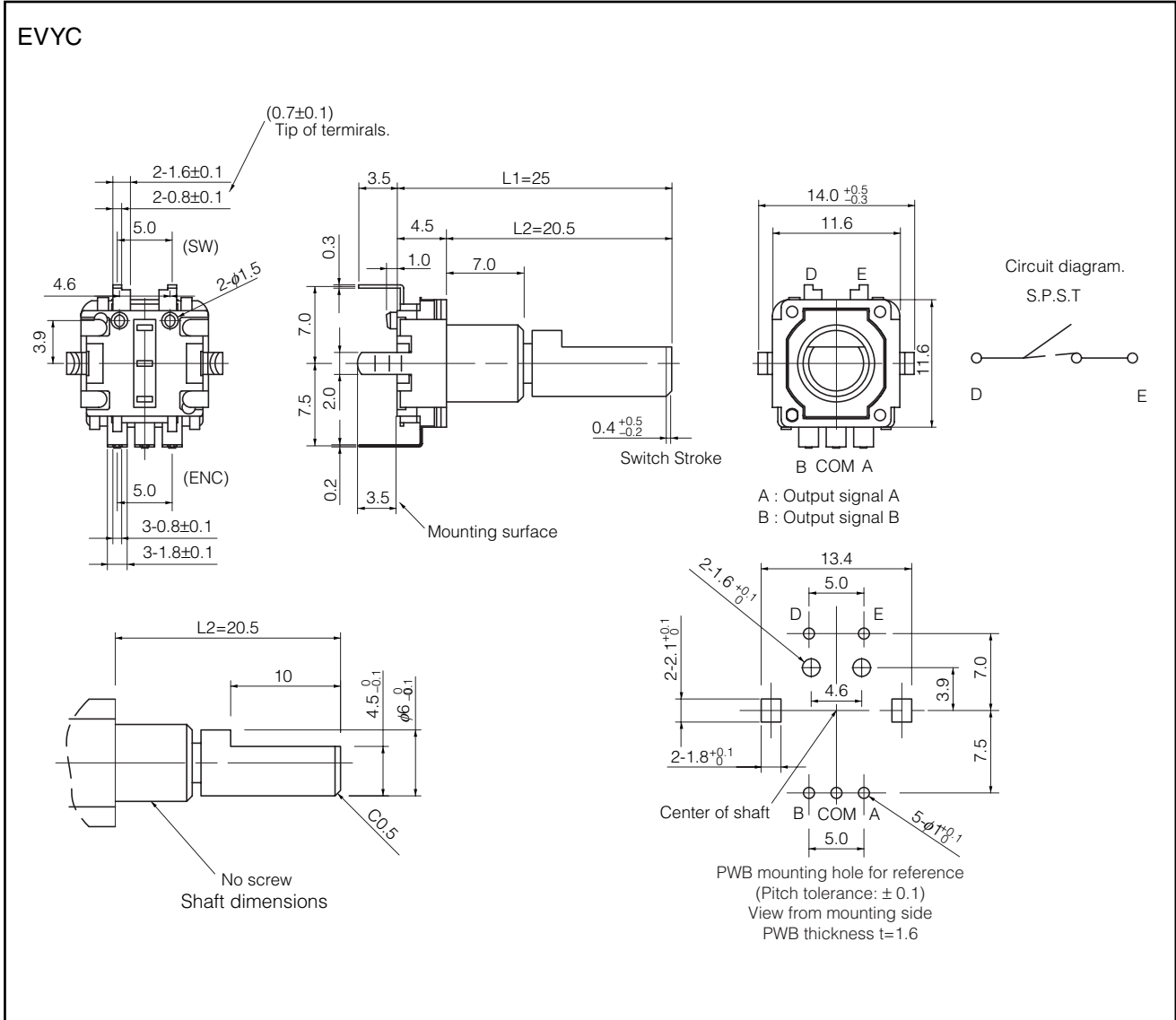
### ■ Explanation Part Numbers



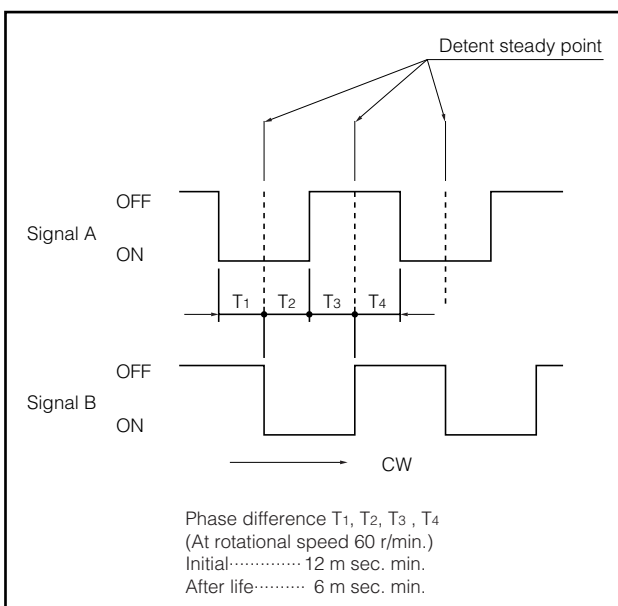
### ■ Specifications

Mechanical	Rotation Angle	360 ° (Endless)
	Shaft Pull/Push Strength	100 N min.
	Shaft Wobble	0.5 × L1 /30 (mm) max.
	Rotation Torque	5 mN·m to 14 mN·m
	Detents	18 points
Electrical	Output Signals	Phase A and B/90 °
	Resolution	9 pulses/360 °
	Rating	1 mA 10 Vdc
	Contact Resistance	1 Ω max.
	Chattering	5 ms max.
	Insulation Resistance	50 MΩ min. (at 250 Vdc)
	Dielectric Withstanding Voltage	300 Vac for 1 minute
Switch Part	Bouncing	5 ms max.
	Type	Push-on switch (SPST)
	Rating	20 mA 16 Vdc
	Contact Resistance	100 mΩ max.
	Operating Force	6.0 N
Endurance	Travel	0.4 mm
	Rotation Life (Encoder)	1000000 cycles min.
	Operating Life (Switch)	1000000 cycles min.
Minimum Quantity/Packing Unit		100 pcs. (Tray Pack)
Quantity/Carton		500 pcs.

## ■ Dimensions in mm (not to scale)



## ■ Phase Difference



## ■ Test Circuit Diagram

