

*Using breakthrough technology,
we aim for products that will create new markets.*

New Product News

Wide range of products

* Note 1

The industry's first side-push type switches with L-shape terminals



Switches

3.5 mm × 2.9 mm Square Side-Push Type Light Touch Switches, With L-Shape Terminals Type

Industry/Field:

Mobile phones

• Development Target:

Miniature side-push type switches whose soldering strength has been improved to meet the requirements of the mechanical strength along its operating direction for "side-push type switches" have been developed.

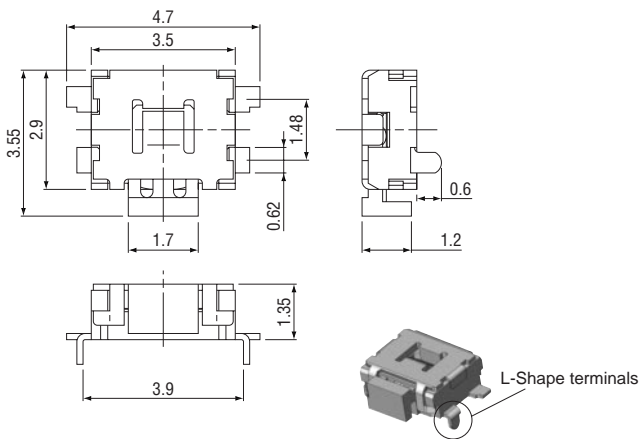
• Features:

- ➊ Improved soldering strength: L-shape board insertion type terminals have been adopted. A soldering strength of 80 to 90 N has been achieved.
- ➋ Supports operating forces of 3.0N, 2.2N, and 1.6N. Operating life: 100 thousand operations or more (at each operating force)
- ➌ Can support grounding terminal types.

* Note1 : As of May 2005

• Number of industrial property rights: 1(Pending)

• Construction:



• Characteristics/specifications:

Item	Specifications
Dimensions	3.5mm × 2.9mm (H=1.35mm)
Rating	20 mA 15 V DC
Contact Resistance	100 mΩ max.
Insulation Resistance	100 MΩ min.
Dielectric Withstanding Voltage	250 V AC (1 minute)
Bouncing	10 ms or less (both ON and OFF)
Operating Force (Operation Life)	1.6 N (100000 cycles min.) 2.2 N (100000 cycles min.) 3.0 N (100000 cycles min.)
Travel	0.15±0.1mm
Operation Temperature	-40°C to +85°C

- Applications/usage examples:
- Mobile terminal equipment, such as mobile phones and PDAs

• Explanation of part numbers:

1	2	3	4	5	6	7	8	9
E	V	Q	P	7				
Product Code			Type		Design No.			