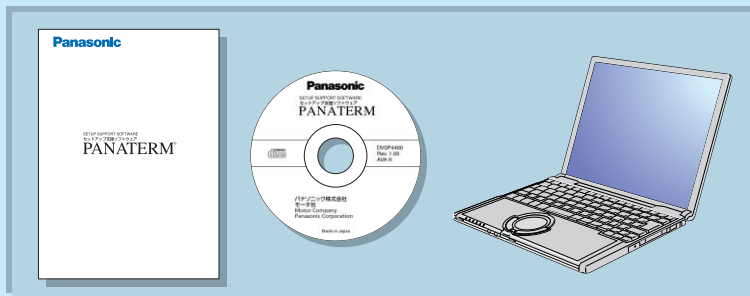


Setup support software DV0P4460

Setup support software "PANATERM" for MINAS series AC servo motor & Driver

The PANATERM assists users in setting parameters, monitoring control conditions, setup support, and analyzing mechanical operation data on the PC screen, when installed in a commercially available personal computer, and connected to the MINAS series through the RS232 serial interface.



Basic function

Parameter setup

- After a parameter is defined on the screen, it will be sent to the driver immediately.
- Once you register parameters you frequently use, they can be easily set up on the screen.

Monitoring control conditions

Monitor

- Control conditions: Control mode, velocity, torque, error and warning
- Driver input signal
- Load conditions: Total count of command/feedback pulses, Load ratio, Regenerative resistor load ratio

Alarm

- Displays the numbers and contents of the current alarm and up to 14 error events in the past.
- Clears the numbers and contents of the current alarm and up to 14 error events in the past.

Setup

Auto tuning

- Gain adjustment and inertia ratio measurement

Graphic waveform display

- The graphic display shows command velocity, actual velocity, torque, and error waveforms.

Absolute encoder setup

- Clears absolute encoder at the origin.
- Displays single revolution/multi-revolution data.
- Displays absolute encoder status.

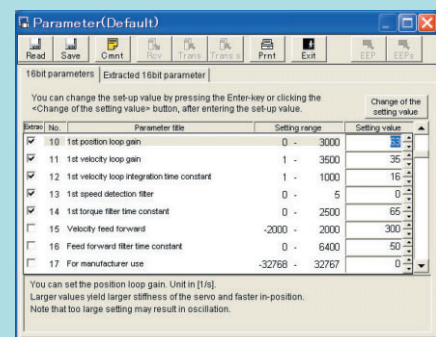
Analysis of mechanical operation data

Frequency analysis

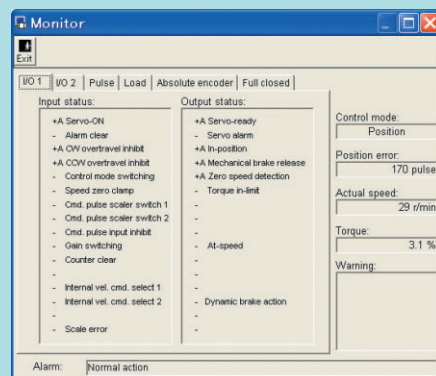
- Measures frequency characteristics of the machine, and displays Bode diagram.

Hardware configuration

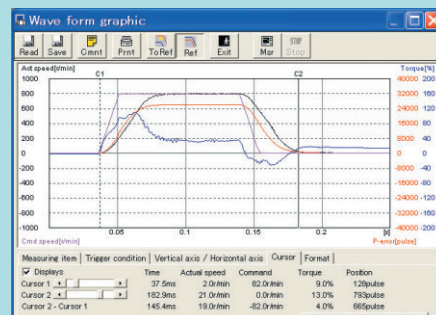
- [Personal computer] • CPU : Pentium 100MHz or more • Memory : 16MB or more (32MB recommended)
 • Hard disk capacity (vacancy of 25MB or more recommended) • OS : Windows®98, Windows®Me, Windows®2000, Windows®XP (US version)
 • Communication speed of serial communication port : 2400bps or more (The software may not operate normally using USB-to-Serial adapter.)
 [Display] • Resolution : 640*480 (VGA) or more (desirably 1024*768) • Number of colors : 256colors or more
 [CD-ROM drive] • CD-ROM drive operable on the above-mentioned personal computer



Parameter



Monitor



Graphic waveform display