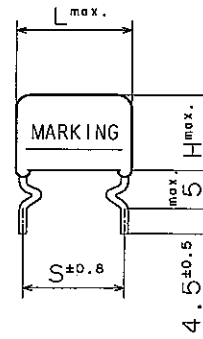


THIRD ANGLE PROJECTION

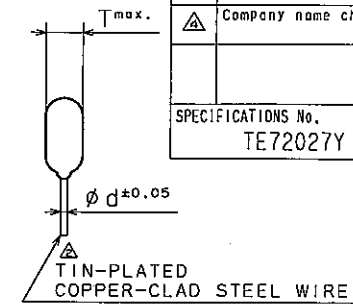
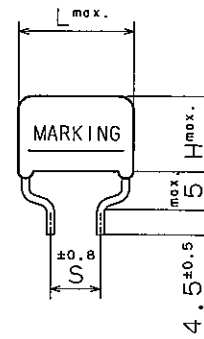
ITEM CODE	RATED VOLTAGE	CAP. μF (*)	DIMENSIONS						MARKING STYLE	FORMING TYPE
			L	T	H	S	d			
ECQE2103()FB	250VDC	0.01 (103)	10.3	4.3	7.4	7.5	0.6	1	D	
# 2123()FB	#	0.012(123)	#	4.4	7.5	#	#	#	#	
# 2153()FB	#	0.015(153)	#	#	#	#	#	#	#	
# 2183()FB	#	0.018(183)	#	#	#	#	#	#	#	
# 2223()FB	#	0.022(223)	#	#	#	#	#	#	#	
# 2273()FB	#	0.027(273)	#	#	#	#	#	#	#	
# 2333()FB	#	0.033(333)	#	4.5	#	#	#	#	#	
# 2393()FB	#	0.039(393)	#	#	#	#	#	#	#	
# 2473()FB	#	0.047(473)	#	#	#	#	#	#	#	
# 2563()FB	#	0.056(563)	#	4.8	7.9	#	#	#	#	
# 2683()FB	#	0.068(683)	#	4.5	7.5	#	#	#	#	
# 2823()FB	#	0.082(823)	#	4.9	8.0	#	#	#	#	
# 2104()FB	#	0.1 (104)	#	5.8	8.4	#	#	#	#	
# 2124()FB	#	0.12 (124)	#	6.0	9.0	#	#	#	#	
# 2154()FB	#	0.15 (154)	#	#	10.8	#	#	#	#	
# 2184()FB	#	0.18 (184)	12.0	5.0	10.3	10.0	#	#	#	
# 2224()FB	#	0.22 (224)	#	5.5	10.5	#	#	#	#	
# 2274()FB	#	0.27 (274)	#	6.0	11.5	#	#	#	#	
# 2334()FB	#	0.33 (334)	#	6.5	12.0	#	#	#	#	
# 2394()FB	#	0.39 (394)	18.5	4.9	#	#	#	2	B	
# 2474()FB	#	0.47 (474)	#	5.3	12.5	#	#	#	#	
# 2564()FB	#	0.56 (564)	#	5.5	13.0	#	#	#	#	
# 2684()FB	#	0.68 (684)	#	6.0	13.5	#	0.8	#	#	
# 2824()FB	#	0.82 (824)	#	6.5	14.5	#	#	#	#	
# 2105()FB	#	1.0 (105)	#	7.4	15.0	#	#	#	#	
# 2125()FB	#	1.2 (125)	#	8.0	15.9	#	#	#	#	
# 2155()FB	#	1.5 (155)	#	9.0	16.8	#	#	#	#	
# 2185()FB	#	1.8 (185)	26.0	7.5	15.5	15.0	#	#	#	
# 2225()FB	#	2.2 (225)	#	8.5	16.3	#	#	#	#	
# 2275()FB	#	2.7 (275)	#	9.4	17.0	#	#	#	#	
# 2335()FB	#	3.3 (335)	#	10.3	18.0	#	#	#	#	
# 2395()FB	#	3.9 (395)	#	11.0	20.5	#	#	#	#	
# 2475()FB	#	4.7 (475)	#	12.0	21.5	#	#	#	#	
# 2565()FB	#	5.6 (565)	31.0	11.8	21.0	22.5	#	#	#	
# 2685()FB	#	6.8 (685)	#	13.0	22.4	#	#	#	#	
# 2825()FB	#	8.2 (825)	#	14.3	23.5	#	#	#	#	
# 2106()FB	#	10.0 (106)	#	15.9	25.8	#	#	#	#	

TOL. SYMBOL(J or K)

TYPE D



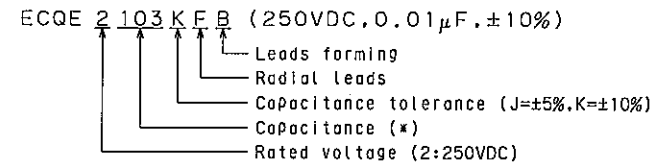
TYPE B



ALTERATION		
ISSUE	DESCRIPTION	DATE
△	Overall rewriting	Jul.30 1999
△	Modification	Jun.20 2002
△	Company name changed	Oct. 1 2004
△	Company name changed	Apr. 1 2005

SPECIFICATIONS No.
TE72027Y

ITEM CODE NUMBER STRUCTURE



CONSTRUCTION

The capacitor is of non-inductive construction, wound with metallized polyester film dielectric.
The capacitor is enclosed in non-combustible epoxy resin and has two leads.

MARKING

Marking comprises capacitance, capacitance tolerance, rated voltage, manufacturer's trademark(STYLE 2 only) and date code.

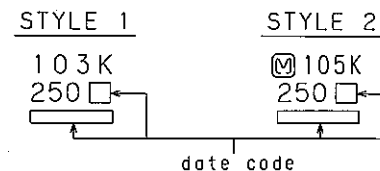
PROPERTIES

Capacitance :See table at 1kHz
 Capacitance tolerance : $\pm 5\%$ (J), $\pm 10\%$ (K) at 1kHz
 Rated voltage :250VDC
 Withstand voltage :250VDCx150% for 60s
 Insulation resistance : $\geq 9000M\Omega$ ($C \leq 0.33\mu F$) at 100VDC, 20°C for 60s
 : $\geq 3000M\Omega \cdot \mu F$ ($C > 0.33\mu F$) at 100VDC, 20°C for 60s
 Dissipation factor : $\leq 1.0\%$ at 1kHz, 20°C
 Category temperature range :From -40°C to +85°C
 (including temperature rise on unit surface)

Reference

DESIGN	E. Takada
CHECKED	M. Nishikiori
APPROVAL	M. Kagaoka
ESTABLISHMENT	Apr. 27, 1987
TYPE NAME	ECQE2***()FB
NAME	Metallized Polyester Film Capacitor
DRAWING NAME	PRODUCT DRAWING
DRAWING No.	CT-H-C012 (1/1)

MARKING EXAMPLE



DO NOT SCALE DRAWING REVISIONS INDICATED BY Δ ALL DIMENSIONS ARE IN MILLIMETERS

Panasonic Electronic Circuit Capacitor Business Unit, Panasonic Electronic Devices Co., Ltd.